

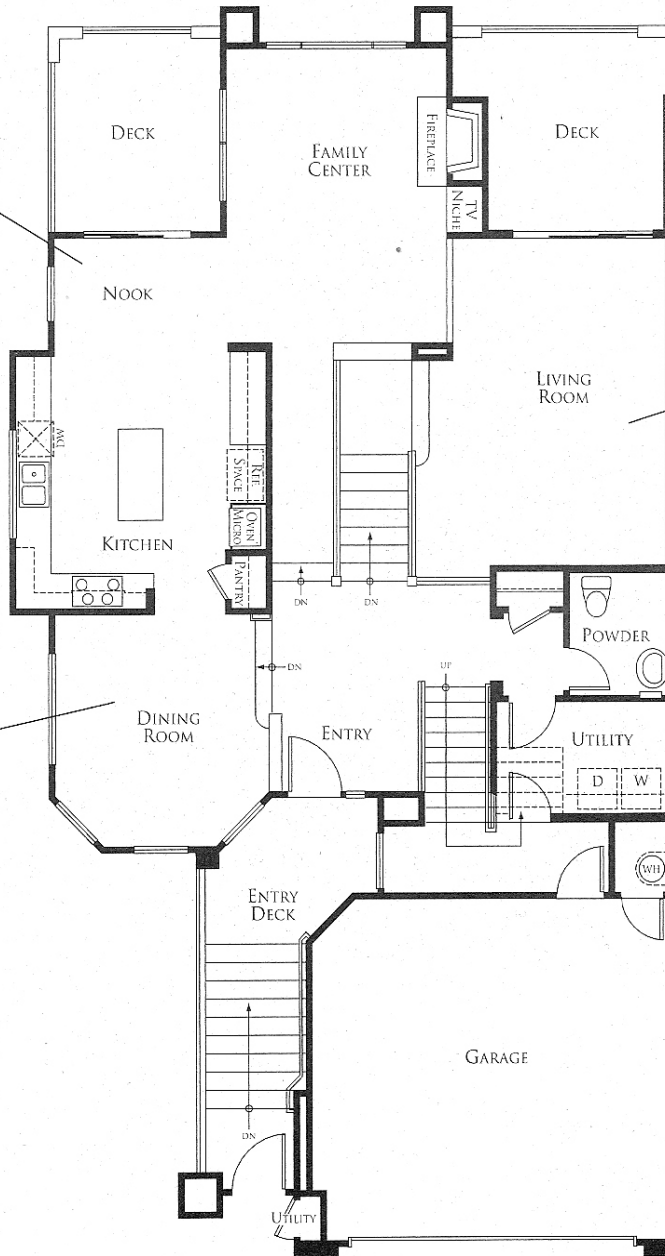
The Carmel

[PLAN SIX] TWO STORY, FOUR BEDROOMS, 2 BATHS PLUS POWDER, 2,718 SQUARE FEET

Everyone's comfortable in this large kitchen, family room and outdoor deck. Perfect for family holidays.

This formal living room creates a quiet retreat for reading or relaxing.

A large party or intimate gathering. This home features wonderful flex space for entertaining including a dramatic formal dining room.



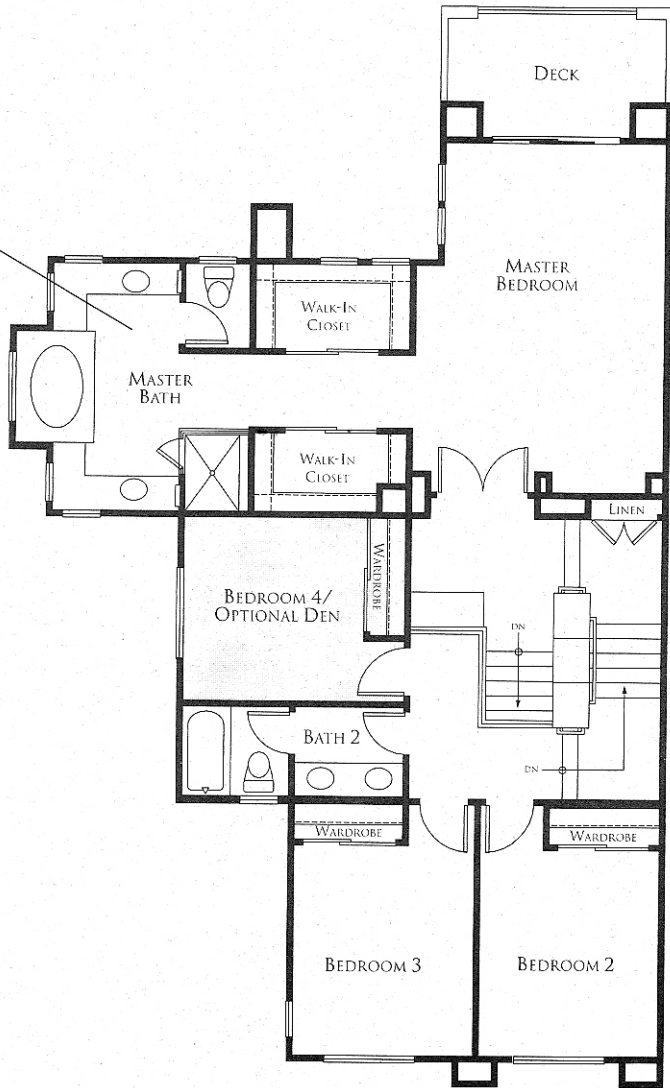
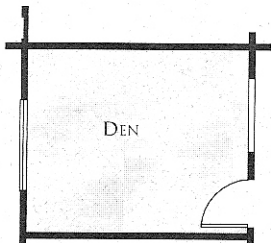
[PRELIMINARY]

The Carmel

[PLAN SIX] SECOND FLOOR



You'll never want to leave this suite with luxurious master bath, private deck and walk-in his and her closets.



REST, REPOSE
OR GENERALLY
GET AWAY FROM
IT ALL IN YOUR
SPACIOUS
MASTER SUITE.

[PRELIMINARY]